

RAINBOWS
REACH
RETREAT

274 Toepfers rd, Wyee [2259](http://www.wyee.com.au).



**Rainbows Reach Retreat
Information Pack**

Terms & Conditions & Rates 2023/2024

- The retreat is set on 77 acres and is low key space, approximately one and a half hours from Sydney, offering a private bush setting, and is accessible via a 3.5 km gravel road, through Olney State Forest.
- The property is OFF GRID relying on the SUN to keep the batteries charged via our Solar Panels so that we have power during the night.
- We have a Generator as a backup source if required.
- Our drinking water is courtesy of the rain gods, please use the water wisely when having a shower or washing the dishes, do not leave taps running. (The water is filtered and is safe to drink).
- We respectfully ask that you turn lights or any unused power source off when not in use, **especially during the night.**
- Please do not bring any power-hungry appliances eg: hair dryers or electric heaters as this will drain our batteries.
- The kitchen is fully equipped with various kitchen utensils, plates, cups, glasses, pots, pans etc. etc.
- The kitchen is equipped with 2 x LPG gas ovens and 1 x separate LPG gas cook-top, 2 x refrigerators.
- The dining area seats approximately 20-30 people.
- The lounge area has ample seating, with a centrally located wood combustion fireplace for the cold nights.
- Internal amenities within the lodge 3 toilets & 3 showers, & room 6 has an on suite.
- External amenities 1 x toilet and 1 x shower (next to meditation hut) about 20 meters from the conference room.
- The Swimming Pool is 11-meter magnesium pool, please no swimming before 8am and after 10pm. **Please no diving.**

- The gazebo facility next to the pool has an LPG BBQ & a wood fired pizza oven and ample seating for your use.
- Fresh water dam and island for you to use, dam swimming is allowed.
Please no diving.
- The Meditation hut/massage room doubles up as a bedroom with a fold down double bed.
- Our conference room is approximately 120 sq meters where you will hold your event with space to spare, overlooking the picturesque dam.
- The Conference room has a wood combustion heater to keep the room warm on any cold day.
- The PA system supplied in the conference room, connects to your phone to play your music, or bring your own PA system.
- If you are bringing any other type of electronic equipment, please don't forget the **cables**.
- Move furniture as you require. **Please return all the furniture** to where you found it before your departure. (**Do not drag** the furniture as it will damage the polished concrete floor.)
- The fire pit is located between the lodge and the conference center, fires will only be lit weather permitting & subject to fire regulations.
- The fire must always be monitored and doused when finished.
- Please check with the retreat owners before lighting the fire.
- We supply timber to burn in the fire pit, please **do not use the timber** that is supplied for the wood combustion heaters as this will incur a **charge of \$160** per cubic meter.
- No metal or timber stakes to be inserted anywhere on the lawn area as all our power and water is underground.
- All external lights are solar powered, if you have a torch, please bring it.
- There are 2 EMERGENCY ASSEMBLY POINTS located in 1. Pool gazebo
2. Car park area.

- The phone & Internet reception is ok, and it will vary with each provider.
- If you are going for a bush walk, please let your facilitator know, take your **charged mobile** phone with you, the property on our north boundary is Private land please do not enter.
- **PUBLIC LIABILITY INSURANCE** for your guests is required, **& you must indemnify Rainbows Reach Retreat from any claim made by you or your guests if they are injured during your stay at the Retreat due to the activities that you have organized.**
- Retreats address is **Rainbows Reach Retreat, 274 Toepfers rd, Wyee 2259** please follow the signs once on Toepfers rd. (use Google Maps)
- Please turn right upon entry to the Retreat to access the guest lodge and parking area, please do not park past or in front of the shed.
- **PARKING IS AT YOUR OWN RISK.**
- Please drive to the road conditions as you will be driving through Olney State Forest and at times the road could be bumpy subject to weather conditions the retreat is accessible with a 2-wheel drive vehicle.
- We hope that you have a great time and enjoy the serenity the Retreat has to offer whether you meditate, bush walk or just relax by the pool or dam.
- The space you are hiring is the Lodge, Conference room, meditation hut & pool area, gazebo & open grassed areas that surround the buildings. You are free to roam the property as you like & go on your bush walks, or just simply chill on the lawn.
- **Areas that are out of bounds are the Machinery Shed and the Main house.**
- **"We ask you to respect our privacy."**
- **We ask you and your guests to adhere to our requests below.**
- **NUDITY IS NOT ALLOWED**
- **NO ILLEGAL ACTIVITY OF ANY KIND**
- **IF THERE IS ANY TYPE OF ILLEGALITY, WE WILL CANCEL YOUR RETREAT AND ASK YOU TO LEAVE. (No refunds)**

Sleeping Facility

“Rainbows Reach Retreat” Bedroom Layout.”

Lodge Bedrooms.

Sleeps

Room 1: Queen bed	2	1
Room 2: 3 x Single bunk beds	6	6
Room 3: Double & Single Bunk bed	3	2
Room 4: Double & Single Bunk bed	3	2
Room 5: 3 x Single bunk beds	6	6

Outside Bedrooms.

Room 6: Pink door with ensuite Queen bed	2	1
Room 7: Purple door Double & Single Bunk bed	3	2
Room 8: Green door Queen bed	2	1
Room 9: Blue door Queen bed	2	1
Room 10: Red door Queen bed	2	1
Room 11: Meditation Hut Double bed	2	1

Using the bedding as double/single Sleeps **33** **33** **24**

Using the above bedding as single Sleeps 24

House Keeping, Supplies & Departures.

This is a self-managed Retreat, BYO caterer/chef & staff. We hire you the facility to run your event and we are here to help you with any request within reason to make your stay enjoyable. We do not employ any staff.

- We supply ample tea towels, bathmats & toilet paper. If you require more, please let us know.
- Blankets, doonas, doona cover, pillow, and pillowcases, are provided.
- **BYO Linen** or sleeping bag, don't forget your towel and toiletries.
- Linen hire is available, sheet set & towel @**25.00 per set** please advise asap prior to retreat date, please make your own beds.
- There is a clothesline to hang your wet towels outside of the kitchen.
- Please place all Retreat soiled linen in the laundry basket provided.
- We supply paper towels & hand towels in all bathrooms.
- As we are on septic tank, **please do not flush the hand paper in the toilet as it will clog the drain and will incur plumbing charges.**
- Please ensure that all **gas appliances are switched off** after use to prevent any fires.
- Please do not leave any **lit candles** unattended as this could cause a fire.
- Please report any faults or breakages ASAP to the Retreat owners so they can be rectified.
- Please dispose of all rubbish in the bins placed outside the lodge. (**Compost, Recycling and General rubbish**). **All general rubbish must be bagged.**
- **On departure facilitators** please check that all rooms have been left tidy, windows are closed, and nothing has been left behind, rubbish removed from all the rooms.
- **If extra cleaning is required, it will be charged @ \$90 per hour.**
- Please clean as you go as it makes the departure easier.
- We would appreciate it if you left our Retreat as clean as possible, refrigerators and ovens emptied and wiped clean cook tops and benches wiped clean, all plates and utensils cleaned and placed in their respective area.
- **Finally**, please notify us of your departure time to inspect the Retreat area together so we can refund the Deposit/Bond ASAP.

Rainbows Reach Retreat Rates 2023-2024.

Booking the Retreat.

Please read this pdf file for all the information and send us any further requests or questions by email.

[admin@rainbowsreachretreat.com.au.](mailto:admin@rainbowsreachretreat.com.au)

Outlining your dates & the type of Retreat & your group numbers.

You can view all available dates of the retreat on the web page calendar, under prices & bookings.

<https://www.rainbowsreachretreat.com.au/prices-and-bookings>

To secure the dates requested, we will send you an invoice for **\$500** please pay within seven days.

This is your booking **Deposit/Bond**, it is non-refundable if you cancel your booking less than 8 weeks before the date booked.

The Deposit/Bond will be refunded to you after your stay, the Retreat must be left clean & undamaged. Please do not deduct the Deposit/Bond from the total amount that was quoted.

A 50% payment is required 3 weeks prior to the booking date and the final 50% payment 1 week prior.

Retreat HireCharges 2023-2024

Booking conditions:

The Retreat charge is based on the total numbers attending. 1-24 or up to 33 maximum guests as per the rates below.

This is inclusive of all your paying guests, facilitator/organizer, and any staff attending the Retreat.

If your numbers go over 24, you will be charged accordingly to the scale as below to a maximum number of 33 people that we allow to stay overnight at Rainbows Reach.

We do not offer any other accommodation type.

Rates below for 3-day 2-night weekend bookings.

Friday 10am to Sunday 5pm **1-24 ppl \$3600** 3-day 2-night rental.

If over **24ppl to a max of 33ppl** rates will be an additional \$150 per person to a maximum cost of **\$4550**.

Rates below are for extended weekend bookings.

Thursday 10am to Sunday 5pm or Friday 10am to Monday 5pm **1-24 ppl \$4800** 4-day 3-night rental.

If over **24ppl to a max 33ppl** rates will be an additional \$190 per person to a maximum cost of **\$5800**

Extra charges:

Firewood for internal combustion heaters \$160 p/cubic Meter.

One week prior to your booking date we do require you to send us a confirmation of the total numbers attending your Retreat inclusive guests' staff and all others attending which will determine your Retreat hire charge.

Facilitators / Organizers

Sleeping & activity arrangements will vary subject to Covid-19 requirements that is mandated by NSW health this will vary from time to time.

- ***Rainbows Reach Retreat is a self-managed facility, to be managed by the hirer.***
- ***We are in the Lake Macquarie city council LGA.***
- ***The Retreat is cleaned by professional cleaners prior to your booking arrival, and it is your responsibility to keep the areas of use clean and sanitized during your stay.***
- ***As we do not have any direct contact with your clients it is your responsibility to comply with the activities you provide and the sleeping arrangements that you have organized.***

Our above terms and conditions and Covid19 plan are correct as of the 16/02/2023 T&Cs may change from time to time without notice.

If your Retreat is canceled by us due to unforeseen circumstances or events beyond our control. We will advise you ASAP and try to re-accommodate your booking or fully refund you.

No compensation will be paid.

We are here to make your visit to our Retreat happy and memorable.

Rainbows Reach Retreat is pro-choice we do not discriminate.

By paying a deposit to book the Retreat for your activities you are accepting our T&Cs Rates and policies stated above.

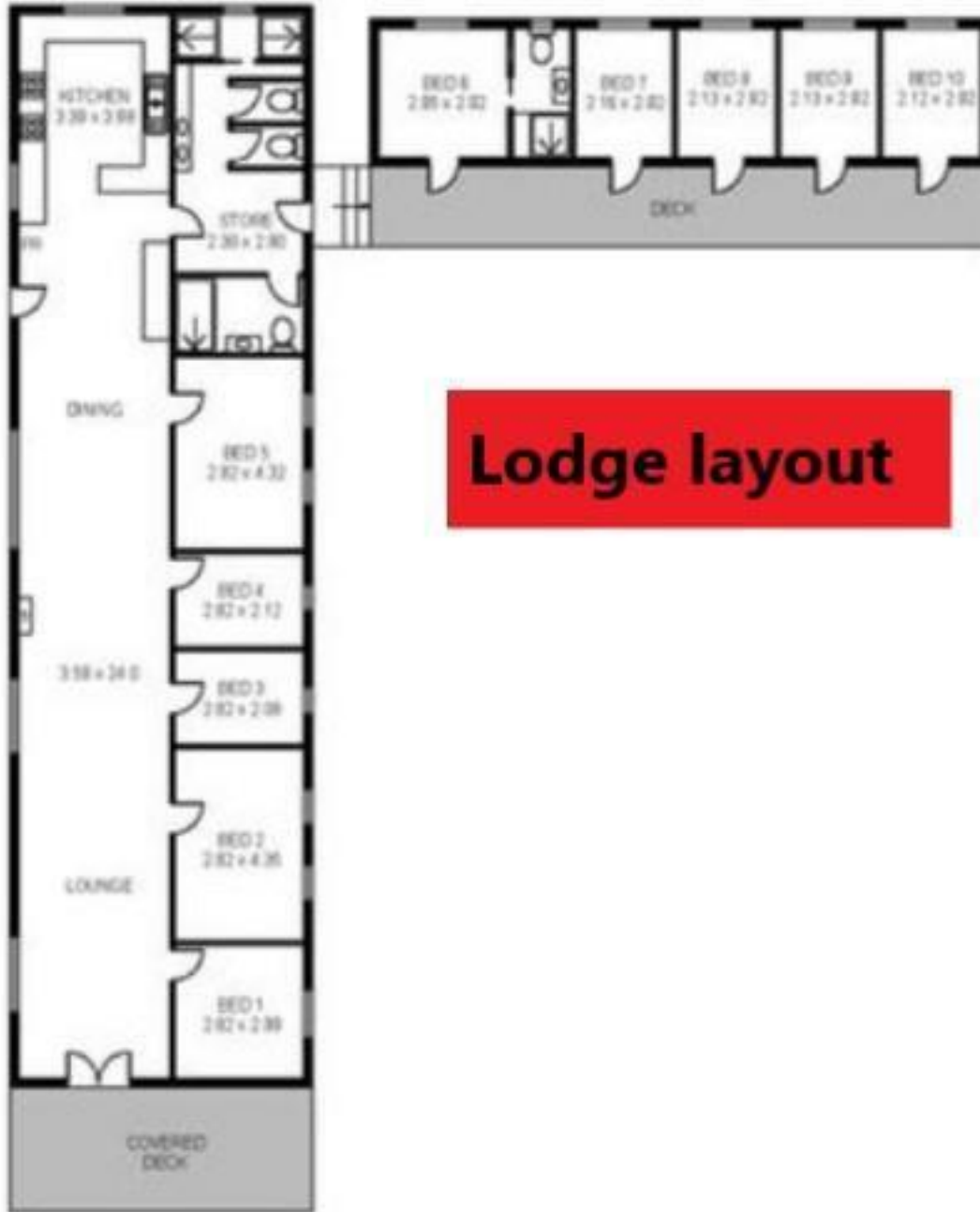
Please deposit all funds as below:

Rainbows Reach Retreat Banking Details:

Toepfers Rd acc

BSB: 082-167 Account: 170640342

Please use a reference name and date of booking or receipt number. Please advise us of any payment you make either by email or SMS.



Lodge layout



Parking area

outside sower/toilet

meditation hut

LODGE

conference room



**Rainbows Reach Retreat
overhead view**



main house

shed

Areas in red are out of bounds

← Rainbows Reach R... × 

See similar places



Martinsville

Cooranbong

B53

Morrisset

Mandalong

Wyee

Doyals

A43

Jiliby

Jiliby

Charmhaven

B70

Lake Haven

ong Creek

To